

202

4.6 HW

p 219 9-14, 19-26

9.

 $\overline{LT} \cong \overline{LR}$ $\angle LTS \cong \angle LRS$

10.

 $\overline{LX} \cong \overline{LW}$ $\angle LX \cong \angle LW$

11.

 $\overline{LS} \cong \overline{LR}$ $\angle LSQ \cong \angle LRS$

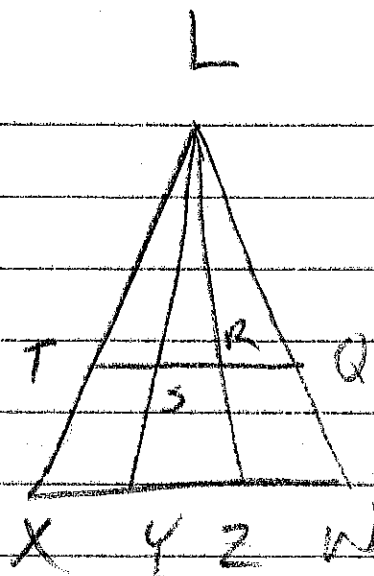
12.

 $\angle LX \cong \angle LY$ $\overline{LX} \cong \overline{LY}$

13.

 $\angle LSR \cong \angle LRS$ $\overline{LS} \cong \overline{LR}$

14.

 $\angle LYW \cong \angle LWY$ $\overline{LY} \cong \overline{LW}$ 

19. $m\angle DFG = 28$

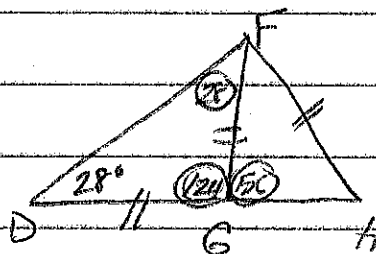
20. $m\angle DGF = 124$

21. $m\angle FGH = 56$

22. $m\angle GFH = 68$

$$\begin{array}{r} 28 \\ \times 2 \\ \hline 56 \end{array}$$

$$\begin{array}{r} 56 \\ \times 2 \\ \hline 112 \end{array}$$

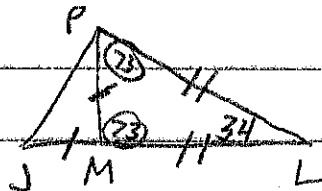


23. $m\angle JPM = 36.5^\circ$

$$\begin{array}{r} 180 \\ - 34 \\ \hline \end{array}$$

$146 \div 2 = 73$

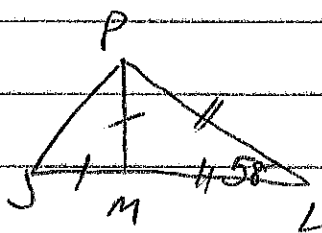
$73 \div 2 = 36.5$



24. $m\angle PJL = 30.5^\circ$

$180 - 58 = 122 \div 2 = 61 \div 2$

30.5

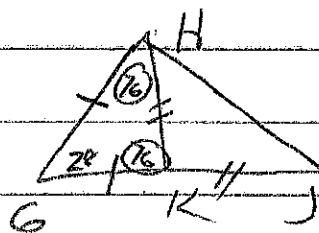


25. $m\angle HJK = 38^\circ$

$$\begin{array}{r} 180 \\ - 28 \\ \hline \end{array}$$

$152 \div 2 = 76$

$76 \div 2 = 38^\circ$



26. $m\angle HJK = 34.5^\circ$

$$\begin{array}{r} 180 \\ - 42 \\ \hline \end{array}$$

$138 \div 2 = 69 \div 2$

